



38000

assembly park drive

WIXOM, MI 48393

New Construction | Excellent Access | Modern Finishes

Jones Lang LaSalle Michigan, LLC, a licensed real estate broker in 48 states  
+1 734 769 3200 | 24 Frank Lloyd Wright Drive, Suite J4200, Ann Arbor, Michigan 48105



# PROPERTY HIGHLIGHTS

Boasting 36,000 SF of space across three floors, 38000 Assembly Park Drive is the perfect combination of modern office space and excellent access. Located just a half mile from I-96, this newly constructed building is close to retail and restaurants while providing a scenic setting.



New construction



Up to 25,000 SF available  
One move in ready suite available on the ground floor



High-end building with beautiful finishes



Scenic setting with wooded views



Excellent Interstate access



Nearby shopping and restaurants



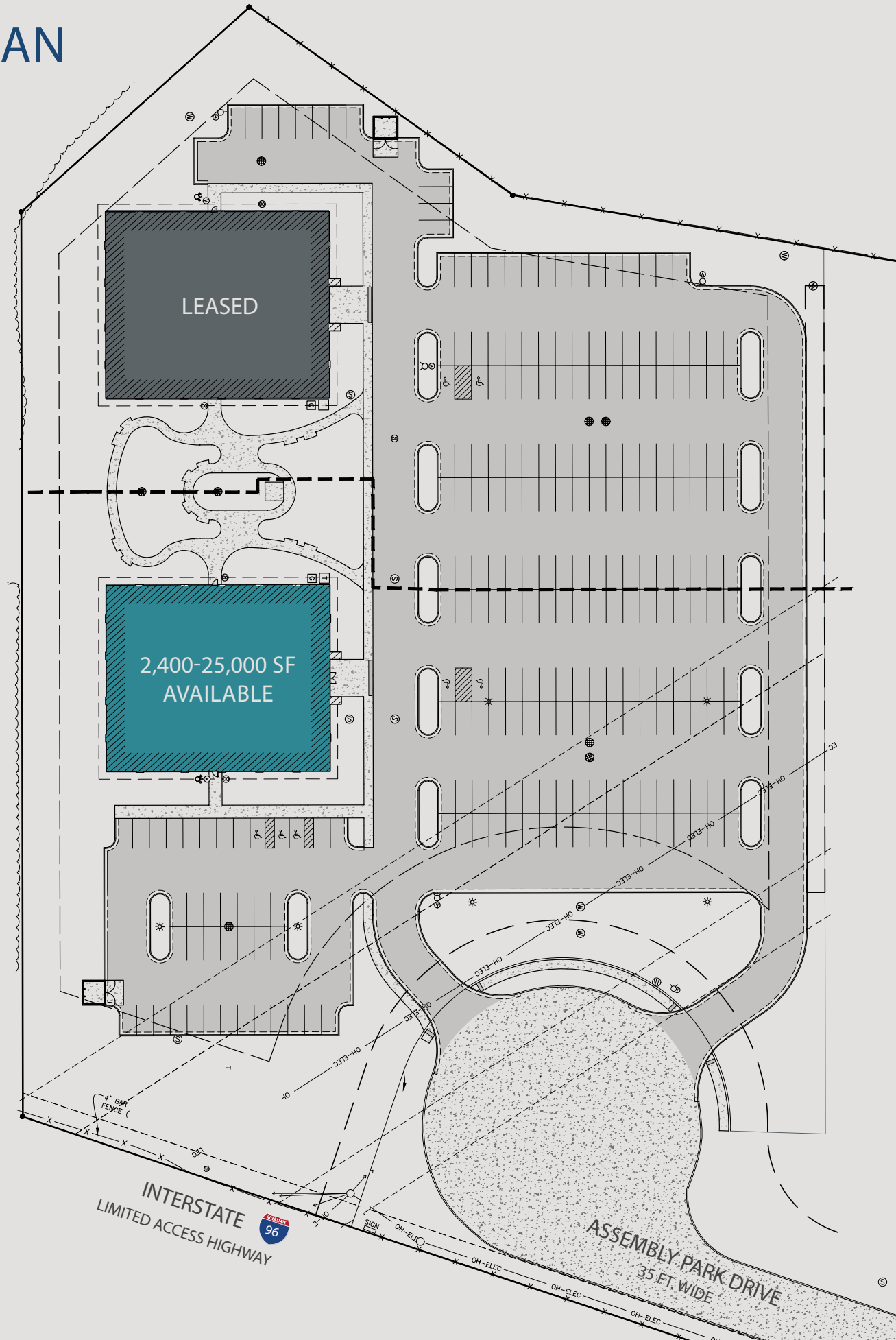
Prominent highway signage for full building user



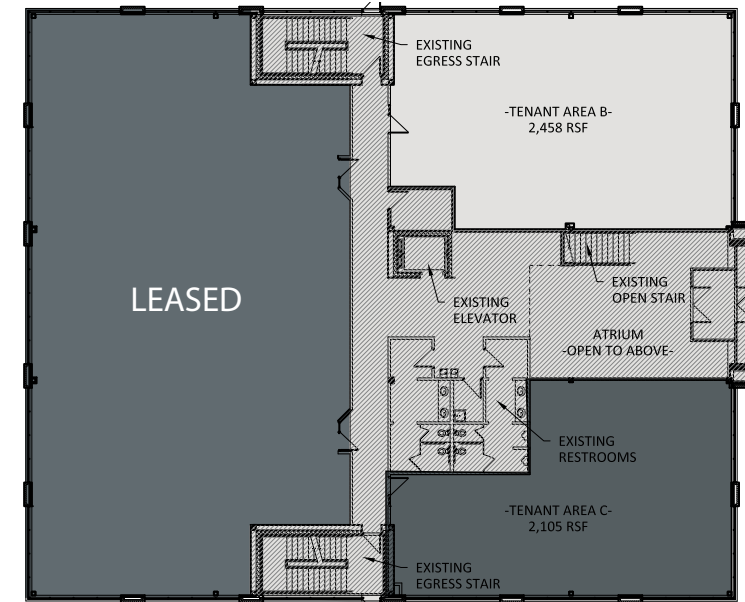
Lease rate: \$17.75/SF, NNN



# SITE PLAN

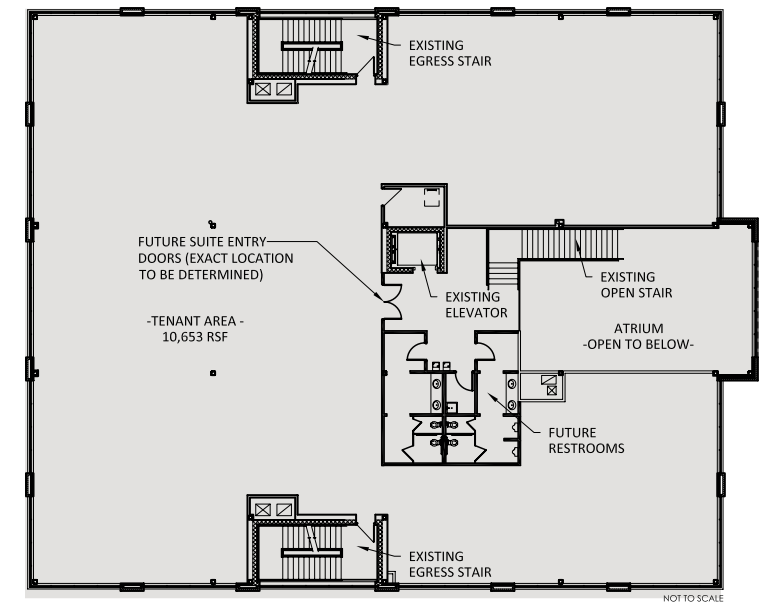


# FLOOR PLANS

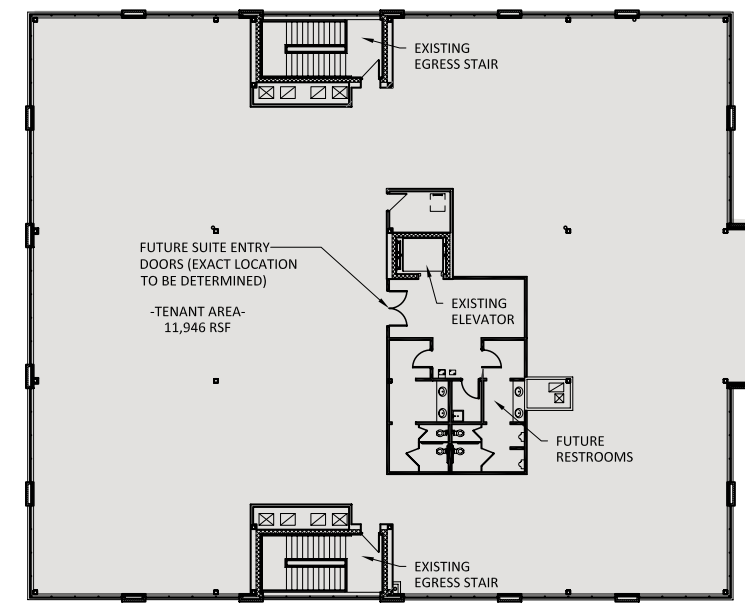


**1ST FLOOR**  
2,458 RSF TENANT AREA

**2ND FLOOR**  
10,653 RSF TENANT AREA



**3RD FLOOR**  
11,946 RSF TENANT AREA





### LEGEND

- Grocery
- Hospitals
- Hotels
- Restaurants
- Retail

# 38000

assembly park drive

38000ASSEMBLY.COM



NEAL WARLING  
+1 734 769 3201  
neal.warling@am.jll.com

KELLY FISHER  
+1 734 769 3203  
kelly.fisher@am.jll.com

Jones Lang LaSalle Michigan, LLC., a licensed real estate broker in 48 states  
+1 734 769 3200 | 24 Frank Lloyd Wright Drive, Suite J4200, Ann Arbor, Michigan 48105

Although information has been obtained from sources deemed reliable, neither Owner nor JLL makes any guarantees, warranties or representations, express or implied, as to the completeness or accuracy as to the information contained herein. Any projections, opinions, assumptions or estimates used are for example only. There may be differences between projected and actual results, and those differences may be material. The Property may be withdrawn without notice. Neither Owner nor JLL accepts any liability for any loss or damage suffered by any party resulting from reliance on this information. If the recipient of this information has signed a confidentiality agreement regarding this matter, this information is subject to the terms of that agreement. ©2021 Jones Lang LaSalle IP, Inc. All rights reserved.